

February 11, 2015

This presentation was prepared by TeHota Construction Management, LLC. on behalf of Hunt Construction Group for the AT&T Center Renovation Project.

It is provided, as a courtesy, to those that attended the UTSA PTAC Business Breakfast hosted at Luby's Cafeteria on February 11, 2015.

The information contained in this presentation is for outreach purposes ONLY and is not intended for bid purposes. Please refer to the issued Bid Documents for ALL bidding and contracting requirements.

Thank for your time and interest in the project.

Telesforo J. (TJ) Pinales, Jr.



HOW TO DO BUSINESS WITH SPURS SPORTS & ENTERTAINMENT

Who do we purchase for?



at&t
CENTER



Questions?

Dave Susi

Senior Procurement/Logistics Manager

dsusi@attcenter.com

210-444-5125



An architectural rendering of the AT&T Center renovation project. The image shows a modern building with a curved facade and a large mural of basketball players. The text is overlaid on the image.

AT&T CENTER RENOVATION PROJECT

UTSA-SBDC, PTAC
Supplier's/ Vendor's Breakfast

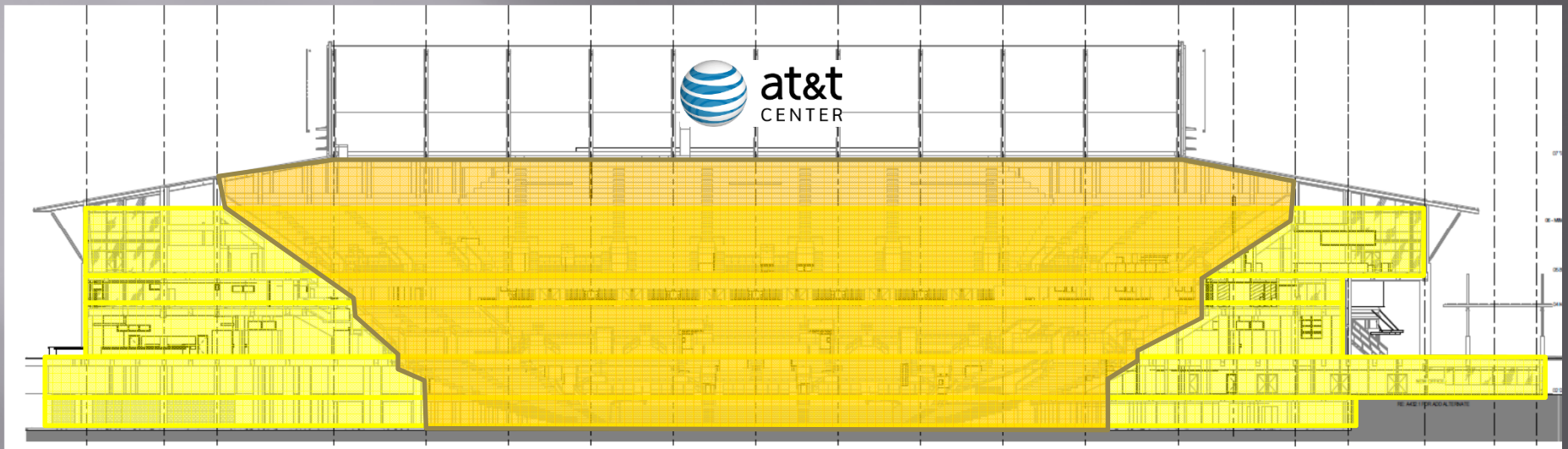
February 11, 2015

AGENDA

- ❑ Introduction
- ❑ Project Description
- ❑ Schedule
- ❑ Key Players
- ❑ Bid Process
- ❑ MWBE Participation

Project Description

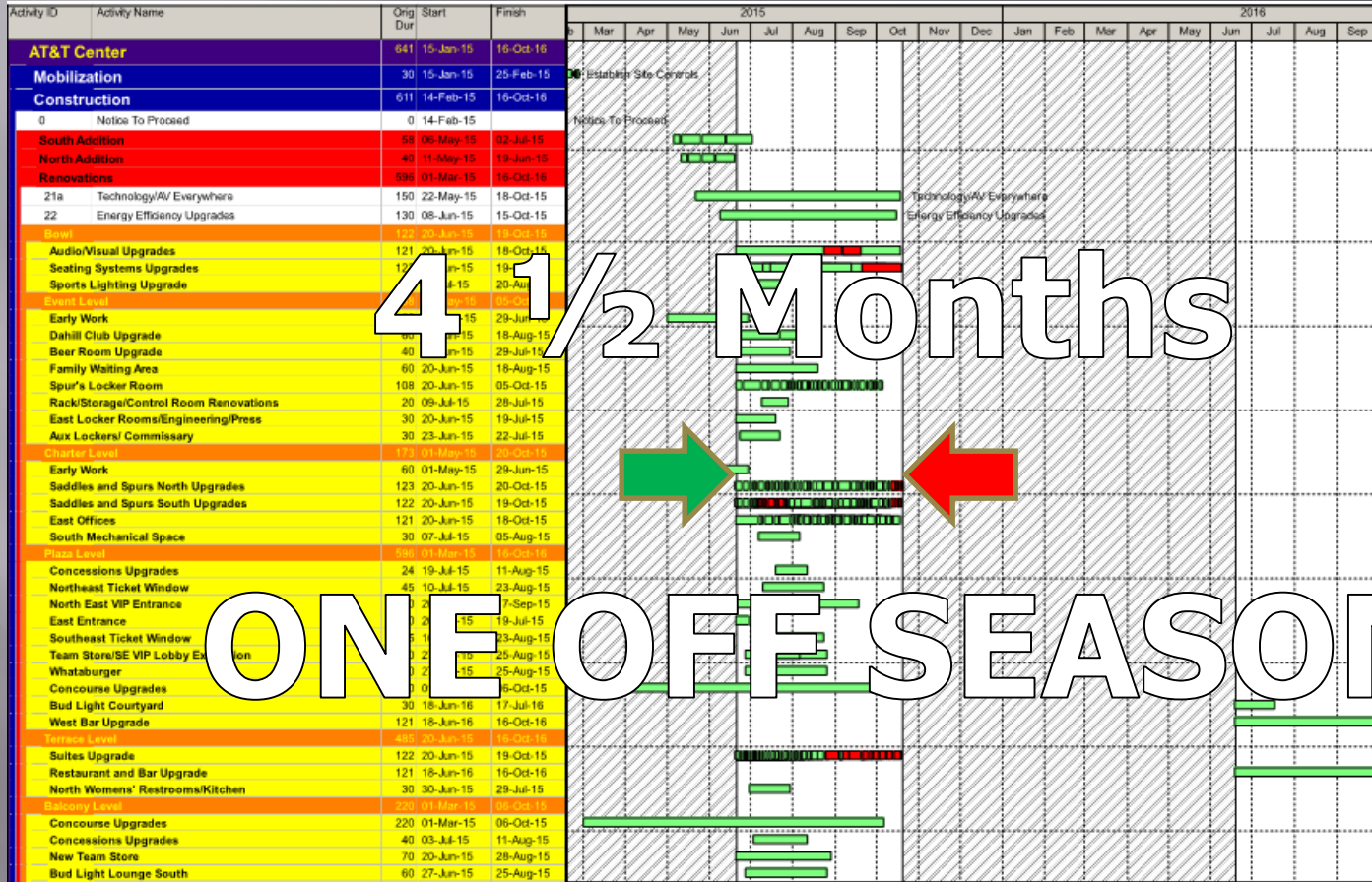
Building Levels



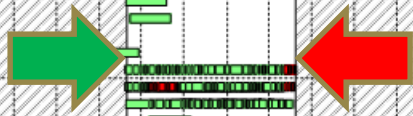
- Balcony Level
- Terrace Level
- Plaza Level

- Charter Level
- Event Level
- BOWL

Schedule



4 1/2 Months



ONE OFF SEASON

Key Players

OWNER >

Bexar County

DEVELOPER >

Spurs Sports &
Entertainment

CM @ RISK >

HUNT
CONSTRUCTION
GROUP

BIDDERS >

BID GROUP #1
Trade Contractors

BID GROUP #2
Trade Contractors

BID PROCESS

BID GROUP #1

- Demolition
- Concrete
- Special Concrete Floor Finishing
- Structural Steel
- Decorative & Steel Railings
- Architectural Millwork & Casework
- Waterproofing
- Roofing
- Fireproofing
- Metal Panels
- Doors/Frames/Hardware
- Aluminum Entrances & Storefronts
- Drywall and Acoustical Ceilings
- Food Service
- Video Production Equipment
- Scoreboards and Ribbon Boards
- Fixed Seating
- Telescopic Stands
- Seating Platforms
- Mechanical and Plumbing
- Electrical
- Communications & Data
- Sound / Audio-Video Systems
- Broadcast Cabling System
- IPTV
- Digital Signage and Advertising
- Security and Access Control

BID 01/15/15

Key Players

OWNER >

Bexar County

DEVELOPER >

Spurs Sports &
Entertainment

CM @ RISK >

HUNT
CONSTRUCTION
GROUP

BIDDERS >

BID DATE:
Jan. 15, 2015

BID GROUP #2
Trade Contractors

BID PROCESS

BID GROUP #2

- Site Utilities
- Masonry
- Ornamental Metals
- Ornamental Railings
- Miscellaneous Steel
- Fireproofing and Thermal Insulation
- Ceramic Tile
- Carpet
- Terrazzo
- Epoxy Flooring
- Flooring
- Painting
- Signage
- Toilet Partitions & Accessories
- Fire Extinguishers & Cabinets
- Blackout Curtains & Draperies
- Site Concrete
- Landscape & Irrigation
- Hardscape
- Site Furnishings
- Pavers
- Final Cleaning

BID PROCESS

- ▣ BID DOCUMENTS
- ▣ Company Experience and Performance
- ▣ Insurance
- ▣ Bonding
- ▣ Comprehensive Scope

BID PROCESS

- ▣ BID DOCUMENTS
 - Design Development - 50% Progress Set
 - Drawings (Multi-Volume)
 - Specifications (Multi-Volume)
 - Consultant Narrative
 - BID MANUAL - Proposal Form, Subcontract Agreement, Schedule, Bid Package Scopes, Contract Requirements
- ▣ Company Experience and Performance
- ▣ Insurance
- ▣ Bonding
- ▣ Comprehensive Scope

BID PROCESS

- ▣ BID DOCUMENTS
- ▣ Company Experience and Performance
 - Relevant Project Experience
 - Capacity to Perform Time-critical Work
 - Experienced Staff to Lead Crews
- ▣ Insurance
- ▣ Bonding
- ▣ Comprehensive Scope

BID PROCESS

- ▣ BID DOCUMENTS
- ▣ Company Experience and Performance
- ▣ Insurance
 - \$2.0 M General Liability - CSL per occurrence for Personal Injury and Property Damage
 - \$2.0M Auto Liability - CSL for Bodily Injury and Property Damage Per Occurrence
 - \$1.0M Worker Comp. and Employer's Liability - Statutory Limits (\$1.0M Ea. Occ/ Ea. Empl./ Policy Limit)
 - \$2.0 M Professional Liability - Per Occ.
- ▣ Bonding
- ▣ Comprehensive Scope

BID PROCESS

- ▣ BID DOCUMENTS
- ▣ Company Experience and Performance
- ▣ Insurance
- ▣ Bonding
 - **Payment and Performance Bond**
 - **Alternate – Subguard ®**
- ▣ Comprehensive Scope

BID PROCESS

Hunt Construction Group

- ▣ BID DOCUMENTS
- ▣ Company Experience and Performance
- ▣ Insurance
- ▣ Bonding
- ▣ Bid Package Proposals
 - **Comprehensive Scope**
 - **Submitted per Plans and Specs**
 - **Acknowledge all Issued Addendas**
 - **Include Allowances for Assumptions**
 - **Limited Exclusions or Documented Exclusions**

BID PROCESS KEY DATES

Bid Documents Released :

February 16, 2015

Final Bid Manual and Scopes of Work:

February 23, 2015

Pre-proposal Walthru, Meeting & MWBE
Networking Event

March 5, 2015

Question Submission Deadline:

March 11, 2015

Proposals due:

March 19, 2015



BID PROCESS

- ▣ BID TURN-IN LOCATION
 - HUNT'S DALLAS MAIN OFFICE
 - AT&T CENTER
 - ONLINE: SmartBidNet.com

MWBE Participation

PROJECT GOAL MUST EXCEED

> 20%

MWBE Participation

- ▣ Accepted agency MWBE certifications?
 - •South Central Texas Regional Certification Agency (SCTRCA)
 - •State of Texas Historically Underutilized Business (TX HUB)
 - •Texas Department of Transportation – Disadvantaged Business Enterprise (TXDOT DBE)
 - •Southwest Minority Supplier Development Council
 - •Women’s Business Enterprise Alliance

MWBE Participation

- ▣ MWBE participation categories (Major Category and Subcategories)
 - *Minority Business Enterprise (MBE)*
 - ▣ *African American Business Entity (AABE)*
 - ▣ *Asian American Business Enterprise (ABE)*
 - ▣ *Hispanic American Business Enterprise (HABE)*
 - ▣ *Native American Business Enterprise (NABE)*
 - *Women-Owned Business Enterprise (WBE)*

MWBE Participation

- ▣ My firm is lacking relevant project experience, sufficient staffing, or limited financial capacity?
 - Team with other MWBE or non-MWBE firms.
 - Joint Venture with other complimentary firm.
 - Meet a prime bidder at the next MWBE networking event to be held March 5, 2015.

MWBE Participation

- ▣ If I am a non-MWBE, where can I find available local MWBE firms to participate on the project?
 - Utilize Certifying Agency Directories.
 - Contact Project MWBE Coordinator.
- ▣ Attend the MWBE network event to be held March 5, 2015.

MWBE Support

Bexar County – SWMBE Office

UTSA SBDC – PTAC Office

HUNT Construction Group

TeHota Construction Management, LLC



REQUEST ACCESS TO BID DOCUMENTS

SUBJECT LINE

"SmartBidNet Document Access for AT&T Center Project Bid Group #2"

Provide the following in the email:

- Point of Contact:
- Email:
- Title:
- Company Name:
- Address:
- City:
- St:
- Zip:
- Main No.:
- Fax No.:
- Alt. No.:

- Division of Work:



FOR MORE INFORMATION CONTACT:

T. J. Pinales
AT&T Center Renovation Project

tj.pinales@tehotacm.com

Or Call
210-598-7361

